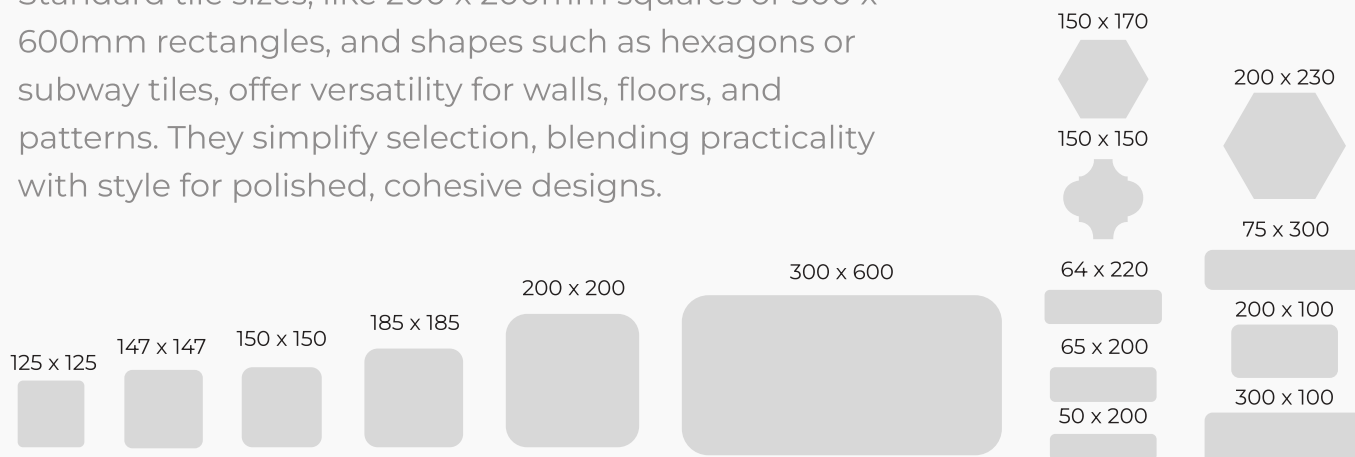


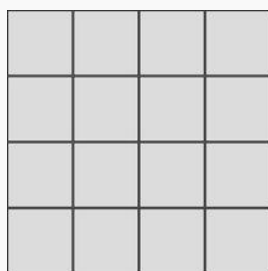
SIZING GUIDE

Standard tile sizes, like 200 x 200mm squares or 300 x 600mm rectangles, and shapes such as hexagons or subway tiles, offer versatility for walls, floors, and patterns. They simplify selection, blending practicality with style for polished, cohesive designs.



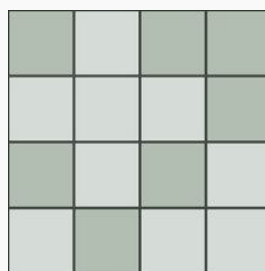
TILE VARIATIONS

Each tile may present subtle differences in colour, tone, and texture, which combine to create a beautifully varied aesthetic. It's also important to note that slight shade variations occur with every production run, enhancing the natural charm of the tiles.



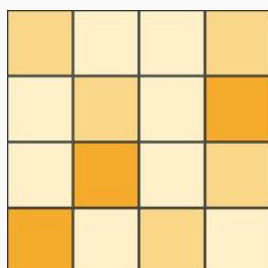
UNIFORMED (V1)

Little to no variation in appearance.



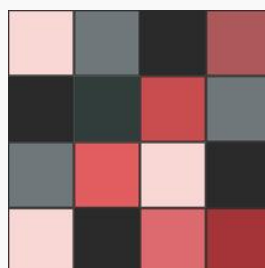
SLIGHT (V2)

Low to moderate colour tone, with subtle variation in patterns and textures



HIGH (V3)

Colour tones and design/patterns may vary from piece to piece considerably



VERY HIGH (V4)

Substantial variation in different colour tones, random patterns and/or textures, unique installation.